

GDL For All Novice Drivers Younger Than 21



Should GDL programs be applied to all novice drivers younger than age 21?

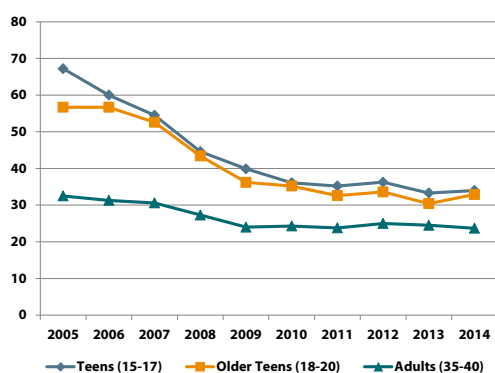
Yes.

- Novice drivers are at increased risk of collision due to their lack of experience driving. In 2015, teen drivers aged 18 to 20 years had a fatal crash rate 1.4 times greater than adult drivers.
- Patterns of crash involvement among teens aged 18 to 20 years are very similar to patterns among 16 to 17 year olds with high crash rates which rapidly decline with experience.
- As many as 36% of beginners in the U.S. are licensed after their 18th birthday. These teens who delay licensing bypass the protective features of GDL programs which have proven safety benefits.
- With a few exceptions, teens enrolled in a GDL program automatically graduate to full license status at age 18 without completing the program and are no longer protected.

In the past decade there has been a general downward trend in fatal crash rates for teen and adult drivers. However, declines among teen drivers aged 15 to 17 years were greatest (49%) due to the safety benefits of GDL programs, as compared to teen drivers aged 18 to 20 years (42%) and adult drivers (27%).



Rate of teen and adult drivers in fatal crashes per 100,000 licensed drivers by age group



Source: GHSA (2016) Mission Not Accomplished: Teen Safe Driving, the Next Chapter. Washington, DC: Governor's Highway Safety Association.

Does this GDL policy have safety benefits?

Yes.

- An evaluation of the GDL program in New Jersey showed positive effects for 18 year olds in relation to all crash types, and in terms of driving during restricted hours and with passengers.
- Only New Jersey applies full GDL program features to novices through age 20.

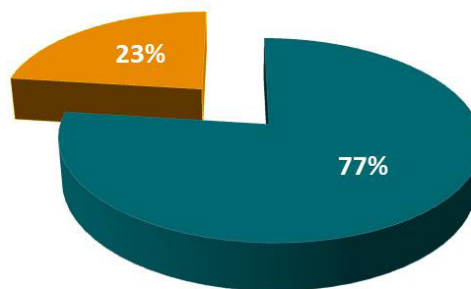


Do teens support this policy?

Yes.

- A survey of 17 to 19 year old teens in New Jersey indicated that 77% approved of the policy.

New Jersey teens aged 17 to 19



- Approved GDL to all novice drivers under age 21
- Did not approve applying GDL to all novice drivers under age 21



Do jurisdictions outside the United States apply GDL to older novice drivers?

Yes.

- In Australia, Canada, and New Zealand, GDL programs equally apply to older novices. In fact, time in the program, not age, determines graduation to a full license.
- Studies in Australia and Canada also indicate that GDL reduces crashes among older novices.



Traffic Injury Research Foundation

The mission of the Traffic Injury Research Foundation (TIRF) is to reduce traffic-related deaths and injuries. TIRF is a national, independent, charitable road safety research institute. Since its inception in 1964, TIRF has become internationally recognized for its accomplishments in a wide range of subject areas related to identifying the causes of road crashes and developing programs and policies to address them effectively.

Traffic Injury Research Foundation (TIRF)
171 Nepean Street, Suite 200
Ottawa, Ontario K2P 0B4
Phone: (877) 238-5235
Fax: (613) 238-5292
Email: tirf@tirf.ca
Website: www.tirf.ca

© Traffic Injury Research Foundation June 2018
ISBN: 978-1-988945-37-8